



18 Lowana Close Mudgee NSW

3 1 2

Situated on an expansive block in a whisper quiet South Mudgee cul-de-sac, this beautifully maintained three-bedroom home radiates charm and warmth. Whether you're a first-time homebuyer, a savvy investor, or looking to downsize, this property offers endless possibilities, waiting for you to discover!

Price : GUIDE \$590,000 - \$610,000
Land Size : 891 sqm
View : <https://www.thepropertyshop.com.au/sale/nsw/dubbo-orana/mudgee/residential/house/8070464>

- Three spacious bedrooms each with built-in robes
- Large light filled living room
- Well appointed kitchen and dining
- Three way bathroom with seperate W/C
- Established trees, gardens and a spacious backyard perfect for kids to enjoy
- Single lock up shed, carport and additional garden shed
- Large 891sqm block with drive through access
- Conveniently located moments from Mudgee Southside Village, local schools, medical facilities, parks & Mudgee Golf Course

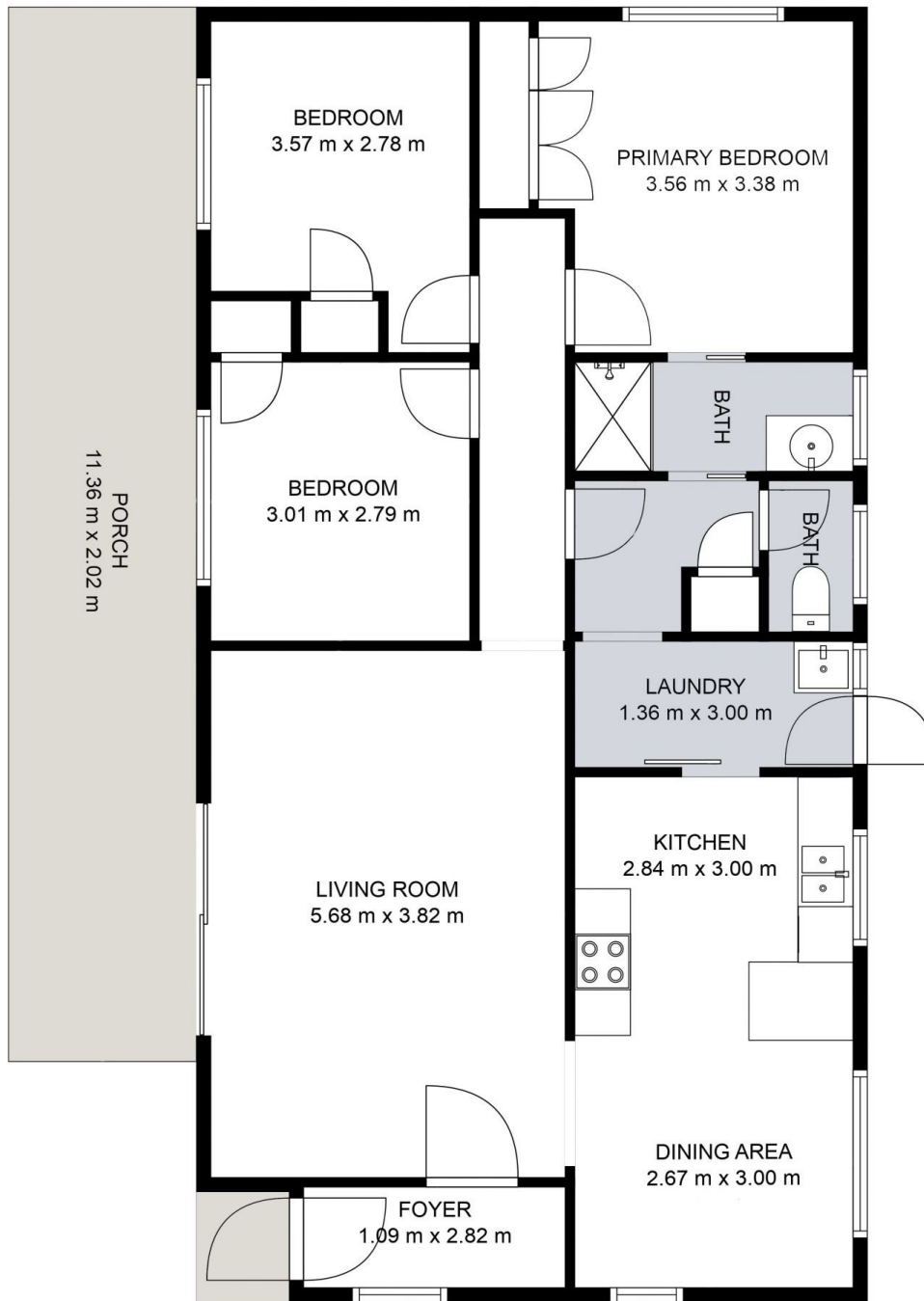


Sara Perry
02 6372 2222



Olivia Dwyer
02 6372 2222

Don't miss your chance to call this exceptional residence yours! Contact Sara Perry on 0400 859 593 or Olivia Dwyer on 0431 972 605 to arrange your private inspection.



ADDRESS: 18 LOWANA CLOSE, MUDGEE

TOTAL: 93 m²
 FLOOR 1: 93 m²
 EXCLUDED AREAS: PORCH 23 m²



DISCLAIMER: FLOOR PLANS AND SITE PLANS ARE FOR ILLUSTRATIVE PURPOSES ONLY.
 ALL DIMENSIONS ARE APPROXIMATE AND IT DOES NOT CONSTITUTE PART OF ANY LEGAL DOCUMENTS.