



4533 Hill End Road Mudgee NSW

3 1 6

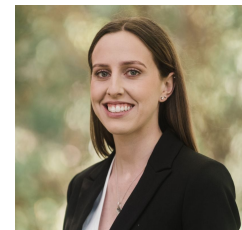
Escape the city and enjoy tranquil rural living on this remarkable property. Located just an easy 35-40 minute drive from Mudgee's CBD, this stunning 333-acre (134.8ha) land boasts picturesque views of the peaceful countryside.

- Three light filled bedrooms, all spacious in size with built in robes
- Expansive open plan living and dining area soaked with natural light
- Modern country style kitchen with electric cooking, pantry & loads of storage
- Stay comfortable year-round with woodfire heating and split air-conditioning
- Main family bathroom with all the essentials, plus second toilet in laundry
- Exceptional shedding with 3 bay 9m x9m approx. shed with concrete floor, power, bar, timber features & large two car awning
- Water is plentiful with three 22,500L approx. fresh rainwater storage
- Offering beautiful, manicured gardens including lush grasslands, established trees & shrubs all meticulously

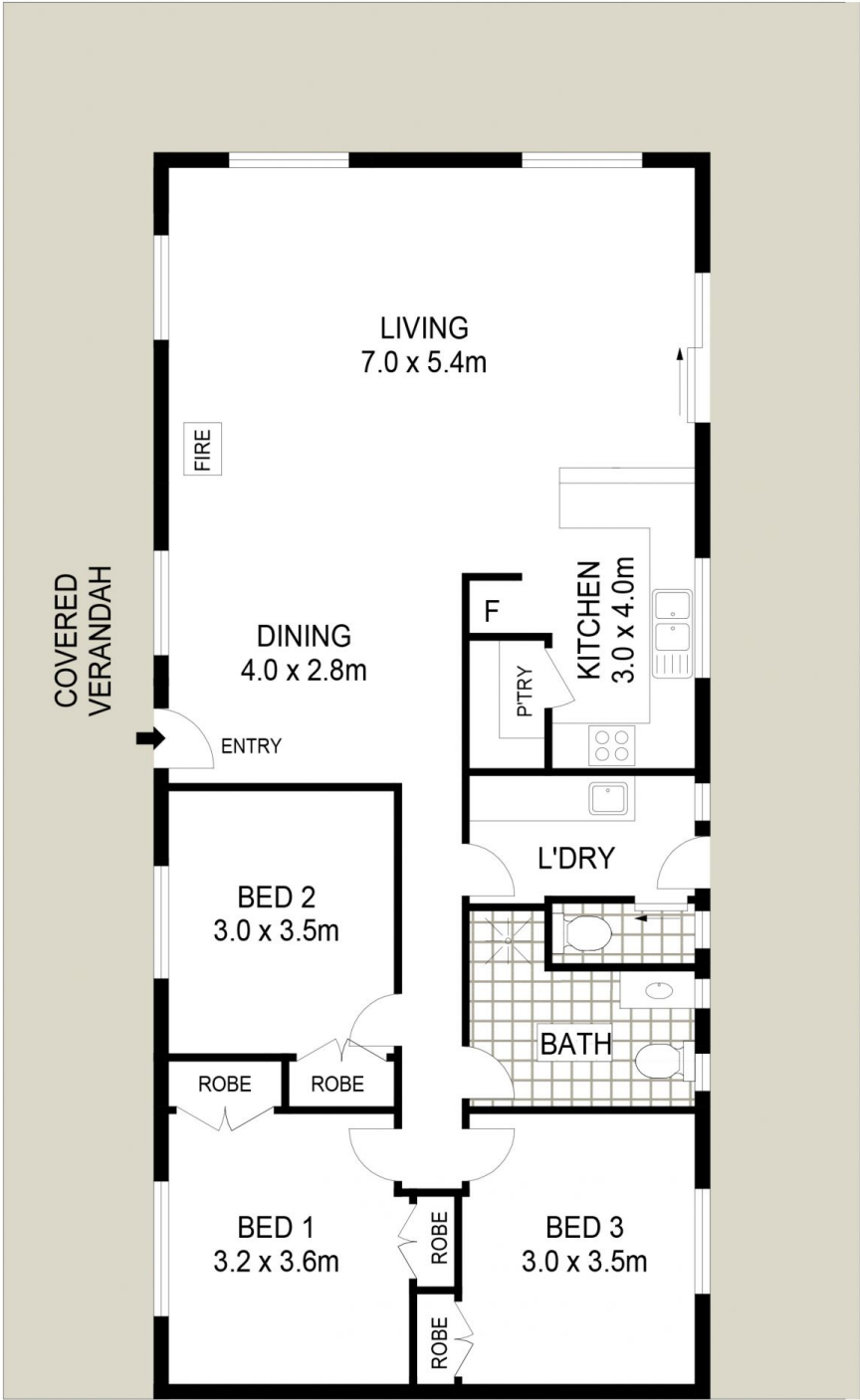
Land Size : 134.8 ha
View : <https://www.thepropertyshop.com.au/sale/nsw/dubbo-orana/mudgee/residential/rural/7651675>



David Goldring
 02 6372 2222



Ashley Olsen
 02 6372 2222



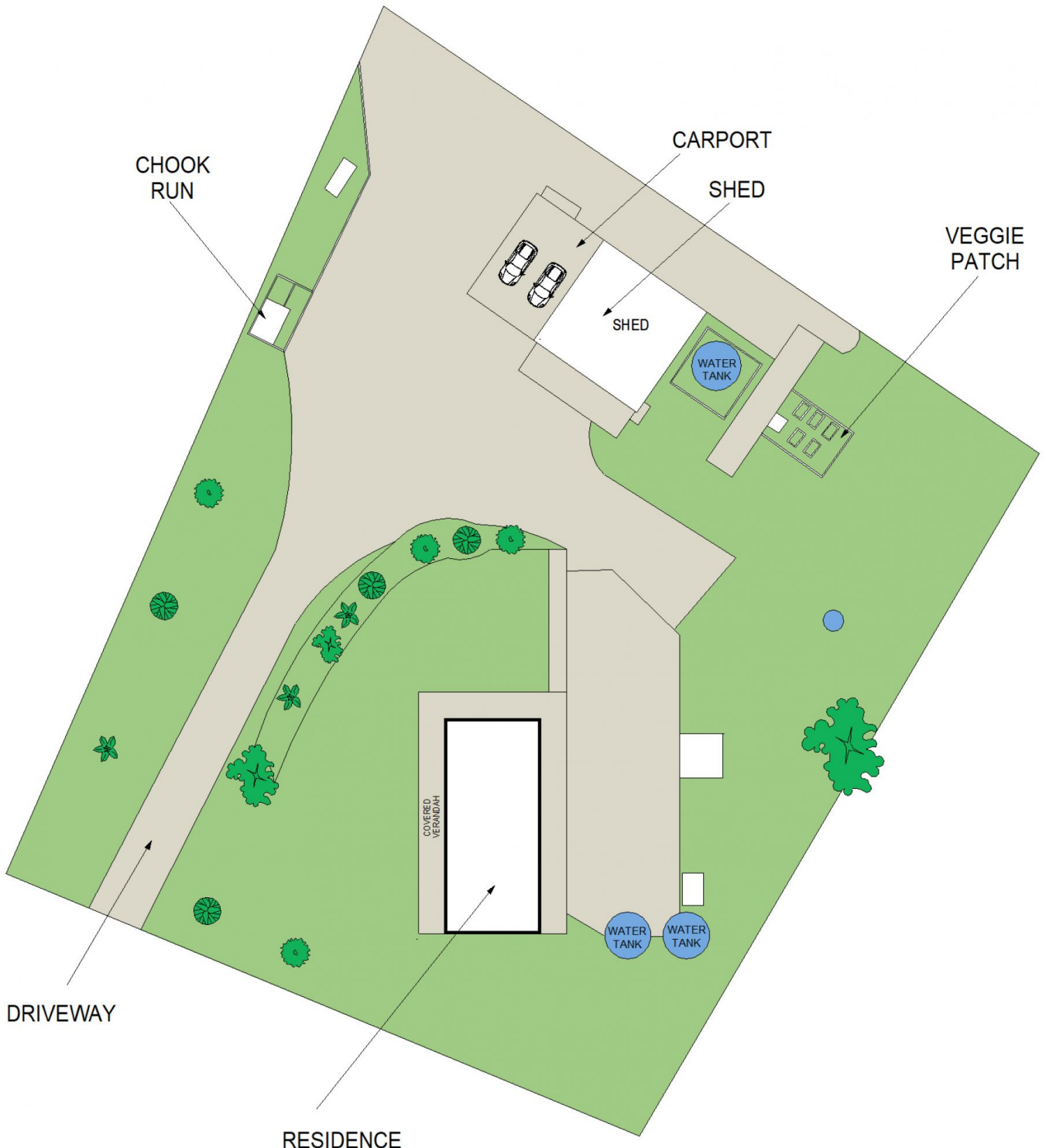
GROUND LEVEL

4533 HILL END ROAD

HARGRAVES



Floor plans and rooms sizes are indicative only



SITE PLAN

4533 HILL END ROAD

HARGRAVES



Floor plans and rooms sizes are indicative only