



552 Bylong Valley Way Ilford NSW

3 🏠 1 🚗 7 🚗

Looking for a tree change with rolling hills, stunning escarpments and a cosy Australian Colonial farmhouse? Then "Waterdale Homestead" is the place you've been dreaming of.

Since its over-hall, it is truly amazing with its new open plan kitchen with a separate formal dining room if desired. New 900mm chefs ovens, stone benchtops, new pantry, new bathroom, hot water system, new shaded BBQ area, fly screen windows and doors, air conditioning, new carpet and painted inside and out. It has been empathetically restored to make it modern and functional while retaining its beautiful Colonial charm. Retaining the original copper just in case you want to ask the kids to boil the washing (you can reveal the washing machine later).

Extra space to relax on the wrap around veranda as you follow the sun or happily sit in the shade with your cup of tea or stronger, listening to the sounds of the bush with King Parrots, Eastern Rosella's and Gala's.

With its beautiful rock escarpments it was the ideal location for "Spider and the Rose" an Australian feature film in 1994

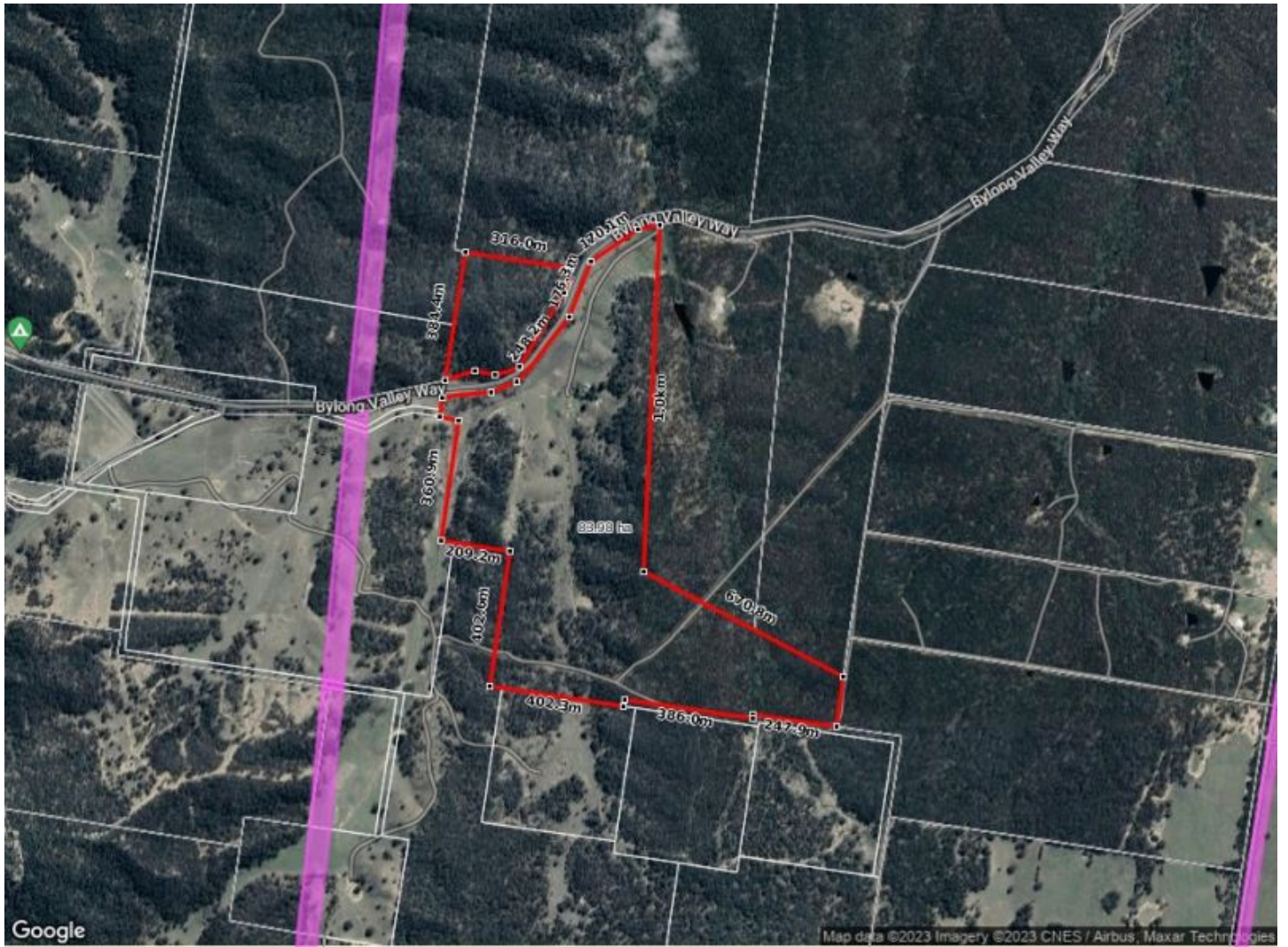
Price : OFFERS OVER \$950,000
Land Size : 84.12 ha
View : <https://www.thepropertyshop.com.au/sale/nsw/dubbo-orana/ilford/residential/rural/7613256>



Sara Perry
02 6372 2222



Olivia Dwyer
02 6372 2222



552 BYLONG VALLEY WAY - ILFORD

