



13 Cook Place Mudgee NSW

Commanding an elevated position with stunning views of Mudgee and its rolling hills, this magnificent block consists of 9,296sqm perfect for building a family home or for those wanting space & privacy. Its also an amazing opportunity for subdivision. This is a rare parcel of land with huge potential.

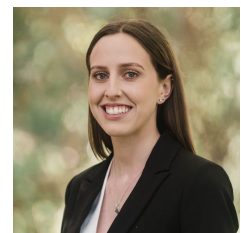
- Set on 9,296sqm, in a quiet cul-de-sac only moments to town amenities
- Situated in a quiet Mudgee South established neighbourhood
- Excellent building sites with views across Mudgee's township
- Zoned R1 General Residential - suitable for subdivision potential (S.T.C.A)

Offering you a once in a lifetime opportunity to secure an executive building block surrounded by Mudgee's iconic view. For more details or to arrange an inspection please contact David Goldring on 0426 251 981 or Ashley McGrath on 0406 635 699.

Land Size : 9296 sqm
View : <https://www.thepropertyshop.com.au/sale/nsw/dubbo-orana/mudgee/residential/land/7334674>



David Goldring
02 6372 2222



Ashley Olsen
02 6372 2222