



6 Chappell Close Mudgee NSW

4 2 4

Located in a peaceful secluded cul-de-sac in Mudgee's South this expansive, light filled family home is designed to accommodate the whole family. Offering ultra-modern finishes and a free-flowing floorplan, ideal for those wanting space, privacy, peace and views. This property is sure to impress.

Price : \$ 970,000
Land Size : 1278 sqm
View : <https://www.thepropertyshop.com.au/sale/nsw/dubbo-orana/mudgee/residential/house/7198443>

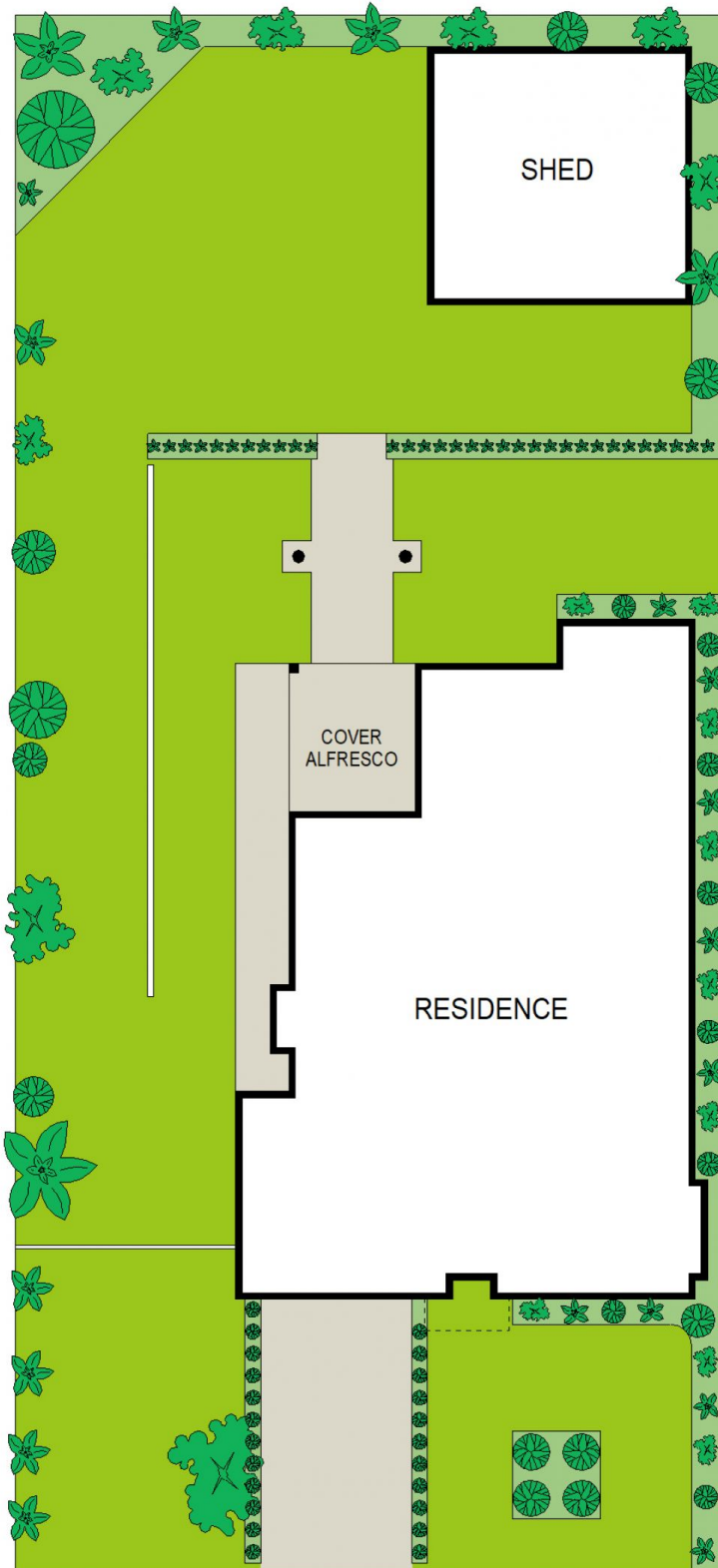
- Oversize main bedroom with "his & her" walk in wardrobes an ensuite to impress with a double shower and double vanity
- Three additional generous sized bedrooms all with built in robes
- Ultra modern kitchen featuring walk in pantry, caesarstone benchtop and breakfast bar
- A seamless floor plan with open plan living and dining flowing effortlessly to outdoor covered alfresco
- Second formal living area perfect for the growing family or quite place to relax
- Stylish modern family bathroom with shower, bath, vanity and toilet
- Comfort provided year round with ducted air conditioning, ceiling fans throughout and a additional ducted vacuum system



David Goldring
02 6372 2222



Ashley Olsen
02 6372 2222



SITE PLAN

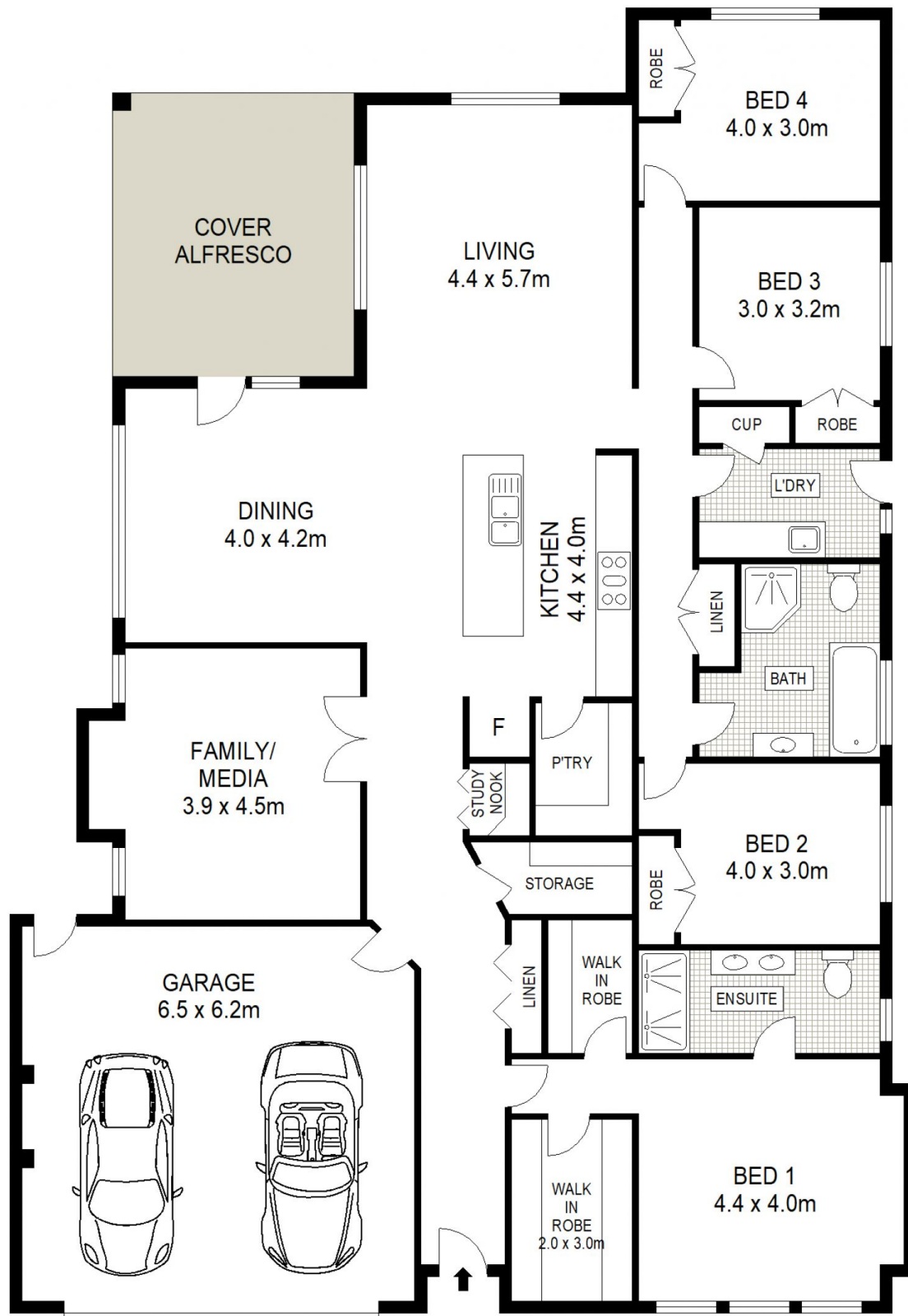
6 CHAPPELL CLOSE

MUDGEES



0 1 2 3 4 5 SCALE (METRES)

Floor plans and rooms sizes are indicative only



GROUND LEVEL

6 CHAPPELL CLOSE

MUDGEES



Floor plans and rooms sizes are indicative only