



108-110 Louee Street Rylstone NSW

3 🏠 2 🚗 3 🚗

The Cordial Factory, only moments from the heart of Rylstone, was built in the early 1880's to supply the local area with flavoured aerated-water drinks. It has since been transformed into a generous residence, and the addition of a second dwelling opens the door for a variety of uses.

Price : \$ 950,000
Land Size : 1323 sqm
View : <https://www.thepropertyshop.com.au/sale/nsw/central-west/rylstone/residential/house/6966917>

Relocate into a historic building, tap into a growing tourism market and a deluxe accommodation opportunity, special event venue, or all of them - it's yours for the creating, and ready now.

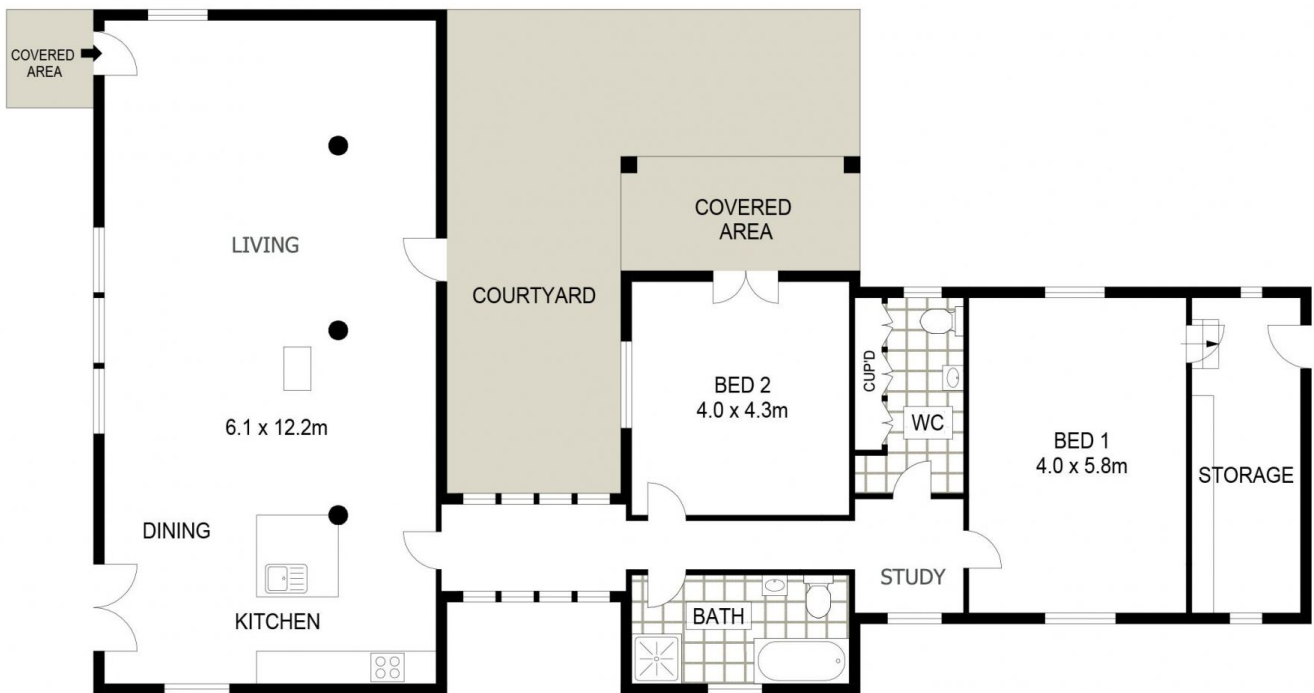
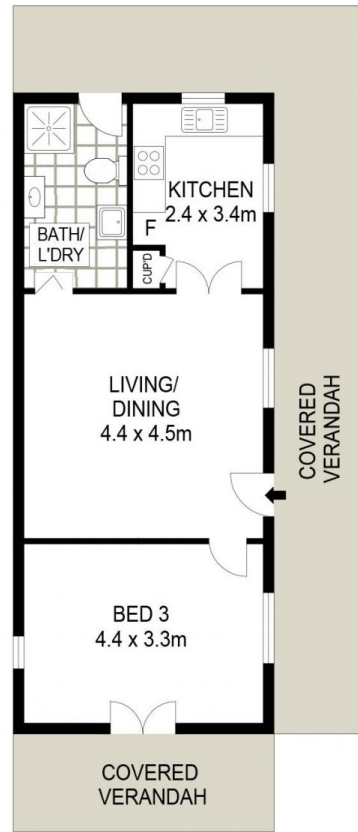
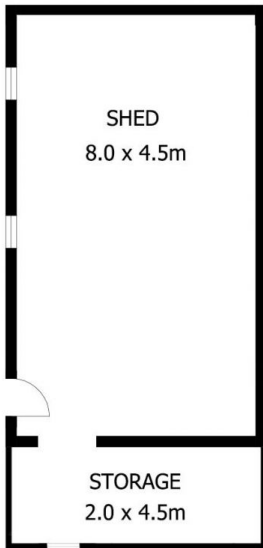
- Constructed from stone with half metre thick walls, the original Cordial Factory has been empathetically and thoroughly restored by the current owner over the course of 3 years, works commencing in 1999
- Raked ceilings with exposed timber beams and huge supporting posts ensure the open plan kitchen and living/dining offers space and many points of interest
- Many recycled materials were reused during the renovation which adds to the charm and history of this beautiful building. The Cordial Factory flooring, bearers & joists were retrieved from a Church Hall being demolished



Sara Perry
02 6372 2222



Patrick Power
02 6372 2222



GROUND LEVEL

108 - 110 LOUEE STREET

RYLSTONE



Floor plans and rooms sizes are indicative only