






7 Florence Close Mudgee NSW

3  2  2 

Beautifully finished with nothing left to do this immaculate home is situated on 1024m² of tree studded grounds in a peaceful cul-de-sac.

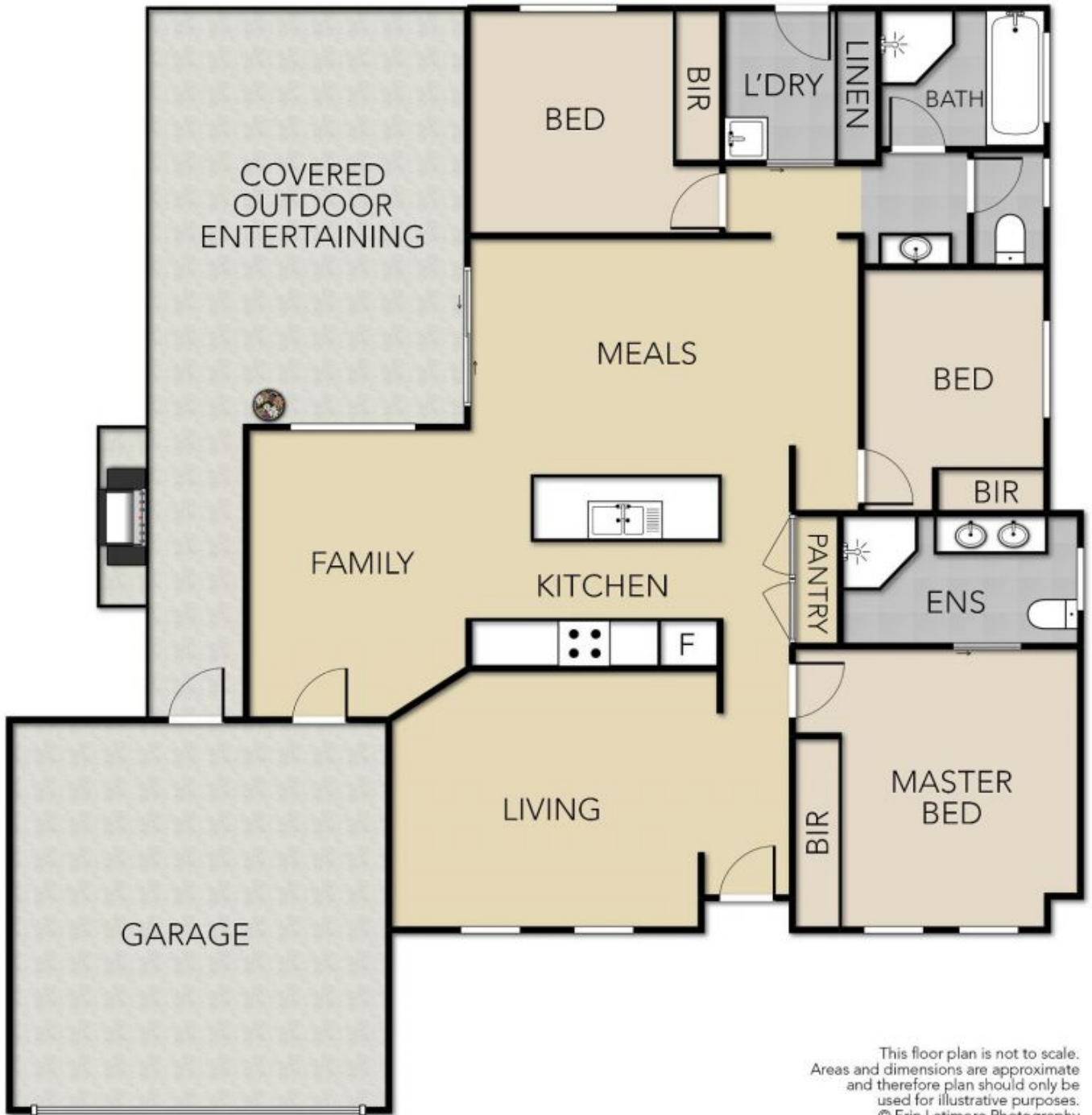
- 3 bedrooms all with built-in robes, master with a large en-suite
- light filled open plan kitchen, dining and living room
- private outdoor entertaining area with stackstone feature wall
- separate formal living room
- double garage with internal access
- beautifully finished and presented throughout
- huge rear yard with established trees and gardens and no rear neighbour

Price : \$ 410,000
Land Size : 1024 sqm
View : <https://www.thepropertyshop.com.au/sale/nsw/dubbo-orana/mudgee/residential/house/5658652>



Andrew Palmer
02 6372 2222

7 FLORENCE CLOSE, MUDGEEO 



This floor plan is not to scale.
Areas and dimensions are approximate
and therefore plan should only be
used for illustrative purposes.
© Erin Latimore Photography