

5/724 Upper Piambong Road Mudgee NSW

Recreation properties do not come much better than this. 98.23 hectares (242acres) of undulating to hilly country adjoining crown land.

- creek frontage with permanent water
- second semi-permanent creek frontage
- hidden valleys and timbered hills
- cleared areas suitable for grazing
- great walking, 4wd and motorbike tracks
- ideal camping and hunting property
- dwelling entitlement subject to council approval
- adjoining lots available
- secluded and private just 28km from Mudgee

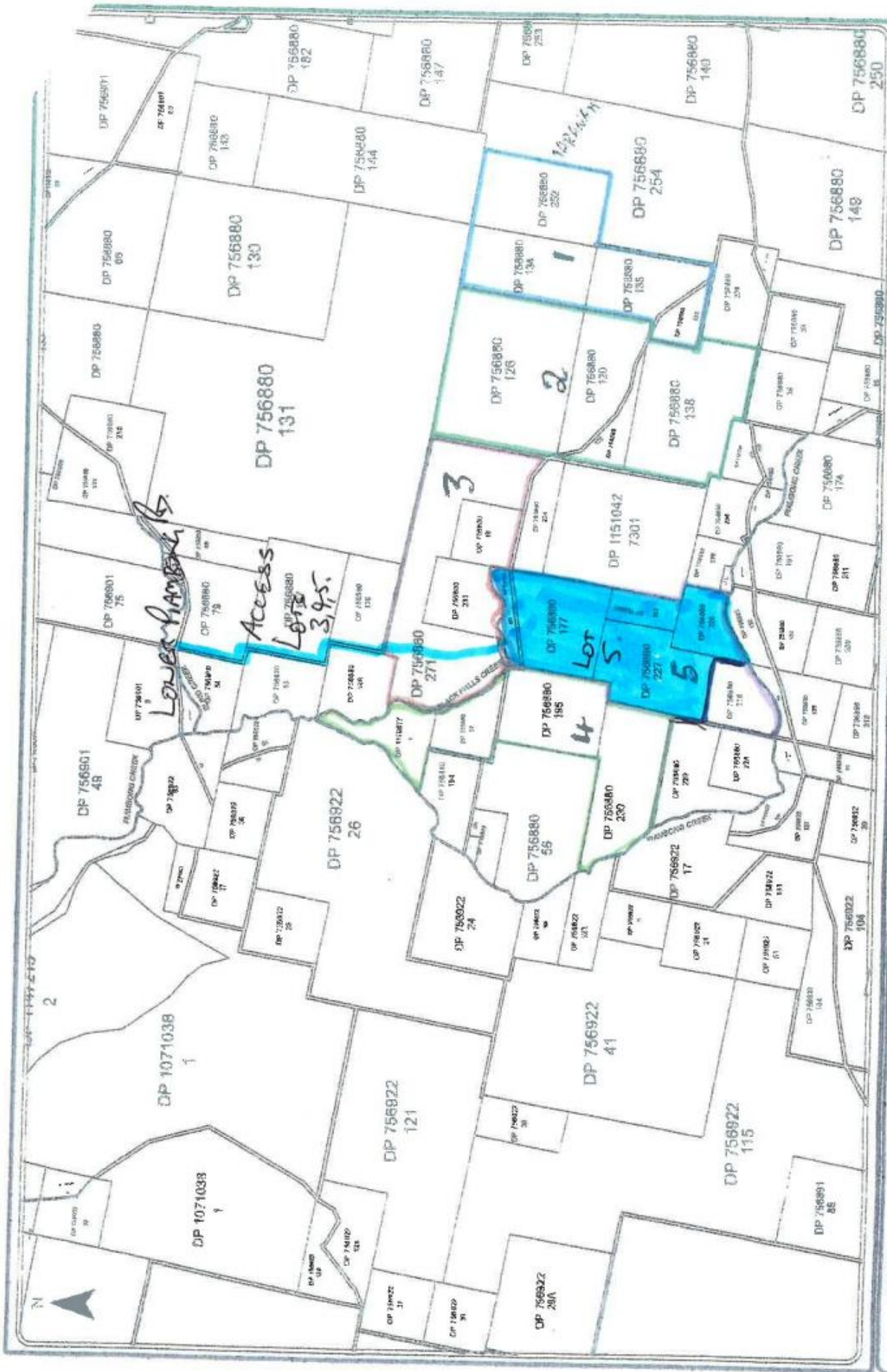
Price : \$ 190,000
Land Size : 98.23 ha
View : <https://www.thepropertyshop.com.au/sale/nsw/dubbo-orana/mudgee/residential/rural/5658600>



Andrew Palmer
02 6372 2222



David Goldring
02 6372 2222



DP 1071038 1
 DP 1071038 2
 DP 756901 48
 DP 756901 75
 DP 756901 76
 DP 756901 77
 DP 756901 78
 DP 756901 79
 DP 756901 80
 DP 756901 81
 DP 756901 82
 DP 756901 83
 DP 756901 84
 DP 756901 85
 DP 756901 86
 DP 756901 87
 DP 756901 88
 DP 756901 89
 DP 756901 90
 DP 756901 91
 DP 756901 92
 DP 756901 93
 DP 756901 94
 DP 756901 95
 DP 756901 96
 DP 756901 97
 DP 756901 98
 DP 756901 99
 DP 756901 100
 DP 1071039 1
 DP 1071039 2
 DP 1071039 3
 DP 1071039 4
 DP 1071039 5
 DP 1071039 6
 DP 1071039 7
 DP 1071039 8
 DP 1071039 9
 DP 1071039 10
 DP 1071039 11
 DP 1071039 12
 DP 1071039 13
 DP 1071039 14
 DP 1071039 15
 DP 1071039 16
 DP 1071039 17
 DP 1071039 18
 DP 1071039 19
 DP 1071039 20
 DP 1071039 21
 DP 1071039 22
 DP 1071039 23
 DP 1071039 24
 DP 1071039 25
 DP 1071039 26
 DP 1071039 27
 DP 1071039 28
 DP 1071039 29
 DP 1071039 30
 DP 1071039 31
 DP 1071039 32
 DP 1071039 33
 DP 1071039 34
 DP 1071039 35
 DP 1071039 36
 DP 1071039 37
 DP 1071039 38
 DP 1071039 39
 DP 1071039 40
 DP 1071039 41
 DP 1071039 42
 DP 1071039 43
 DP 1071039 44
 DP 1071039 45
 DP 1071039 46
 DP 1071039 47
 DP 1071039 48
 DP 1071039 49
 DP 1071039 50
 DP 1071039 51
 DP 1071039 52
 DP 1071039 53
 DP 1071039 54
 DP 1071039 55
 DP 1071039 56
 DP 1071039 57
 DP 1071039 58
 DP 1071039 59
 DP 1071039 60
 DP 1071039 61
 DP 1071039 62
 DP 1071039 63
 DP 1071039 64
 DP 1071039 65
 DP 1071039 66
 DP 1071039 67
 DP 1071039 68
 DP 1071039 69
 DP 1071039 70
 DP 1071039 71
 DP 1071039 72
 DP 1071039 73
 DP 1071039 74
 DP 1071039 75
 DP 1071039 76
 DP 1071039 77
 DP 1071039 78
 DP 1071039 79
 DP 1071039 80
 DP 1071039 81
 DP 1071039 82
 DP 1071039 83
 DP 1071039 84
 DP 1071039 85
 DP 1071039 86
 DP 1071039 87
 DP 1071039 88
 DP 1071039 89
 DP 1071039 90
 DP 1071039 91
 DP 1071039 92
 DP 1071039 93
 DP 1071039 94
 DP 1071039 95
 DP 1071039 96
 DP 1071039 97
 DP 1071039 98
 DP 1071039 99
 DP 1071039 100
 DP 1071038 101
 DP 1071038 102
 DP 1071038 103
 DP 1071038 104
 DP 1071038 105
 DP 1071038 106
 DP 1071038 107
 DP 1071038 108
 DP 1071038 109
 DP 1071038 110
 DP 1071038 111
 DP 1071038 112
 DP 1071038 113
 DP 1071038 114
 DP 1071038 115
 DP 1071038 116
 DP 1071038 117
 DP 1071038 118
 DP 1071038 119
 DP 1071038 120
 DP 1071038 121
 DP 1071038 122
 DP 1071038 123
 DP 1071038 124
 DP 1071038 125
 DP 1071038 126
 DP 1071038 127
 DP 1071038 128
 DP 1071038 129
 DP 1071038 130
 DP 1071038 131
 DP 1071038 132
 DP 1071038 133
 DP 1071038 134
 DP 1071038 135
 DP 1071038 136
 DP 1071038 137
 DP 1071038 138
 DP 1071038 139
 DP 1071038 140
 DP 1071038 141
 DP 1071038 142
 DP 1071038 143
 DP 1071038 144
 DP 1071038 145
 DP 1071038 146
 DP 1071038 147
 DP 1071038 148
 DP 1071038 149
 DP 1071038 150
 DP 1071038 151
 DP 1071038 152
 DP 1071038 153
 DP 1071038 154
 DP 1071038 155
 DP 1071038 156
 DP 1071038 157
 DP 1071038 158
 DP 1071038 159
 DP 1071038 160
 DP 1071038 161
 DP 1071038 162
 DP 1071038 163
 DP 1071038 164
 DP 1071038 165
 DP 1071038 166
 DP 1071038 167
 DP 1071038 168
 DP 1071038 169
 DP 1071038 170
 DP 1071038 171
 DP 1071038 172
 DP 1071038 173
 DP 1071038 174
 DP 1071038 175
 DP 1071038 176
 DP 1071038 177
 DP 1071038 178
 DP 1071038 179
 DP 1071038 180
 DP 1071038 181
 DP 1071038 182
 DP 1071038 183
 DP 1071038 184
 DP 1071038 185
 DP 1071038 186
 DP 1071038 187
 DP 1071038 188
 DP 1071038 189
 DP 1071038 190
 DP 1071038 191
 DP 1071038 192
 DP 1071038 193
 DP 1071038 194
 DP 1071038 195
 DP 1071038 196
 DP 1071038 197
 DP 1071038 198
 DP 1071038 199
 DP 1071038 200
 DP 1071038 201
 DP 1071038 202
 DP 1071038 203
 DP 1071038 204
 DP 1071038 205
 DP 1071038 206
 DP 1071038 207
 DP 1071038 208
 DP 1071038 209
 DP 1071038 210
 DP 1071038 211
 DP 1071038 212
 DP 1071038 213
 DP 1071038 214
 DP 1071038 215
 DP 1071038 216
 DP 1071038 217
 DP 1071038 218
 DP 1071038 219
 DP 1071038 220
 DP 1071038 221
 DP 1071038 222
 DP 1071038 223
 DP 1071038 224
 DP 1071038 225
 DP 1071038 226
 DP 1071038 227
 DP 1071038 228
 DP 1071038 229
 DP 1071038 230
 DP 1071038 231
 DP 1071038 232
 DP 1071038 233
 DP 1071038 234
 DP 1071038 235
 DP 1071038 236
 DP 1071038 237
 DP 1071038 238
 DP 1071038 239
 DP 1071038 240
 DP 1071038 241
 DP 1071038 242
 DP 1071038 243
 DP 1071038 244
 DP 1071038 245
 DP 1071038 246
 DP 1071038 247
 DP 1071038 248
 DP 1071038 249
 DP 1071038 250
 DP 1071038 251
 DP 1071038 252
 DP 1071038 253
 DP 1071038 254
 DP 1071038 255
 DP 1071038 256
 DP 1071038 257
 DP 1071038 258
 DP 1071038 259
 DP 1071038 260
 DP 1071038 261
 DP 1071038 262
 DP 1071038 263
 DP 1071038 264
 DP 1071038 265
 DP 1071038 266
 DP 1071038 267
 DP 1071038 268
 DP 1071038 269
 DP 1071038 270
 DP 1071038 271
 DP 1071038 272
 DP 1071038 273
 DP 1071038 274
 DP 1071038 275
 DP 1071038 276
 DP 1071038 277
 DP 1071038 278
 DP 1071038 279
 DP 1071038 280
 DP 1071038 281
 DP 1071038 282
 DP 1071038 283
 DP 1071038 284
 DP 1071038 285
 DP 1071038 286
 DP 1071038 287
 DP 1071038 288
 DP 1071038 289
 DP 1071038 290
 DP 1071038 291
 DP 1071038 292
 DP 1071038 293
 DP 1071038 294
 DP 1071038 295
 DP 1071038 296
 DP 1071038 297
 DP 1071038 298
 DP 1071038 299
 DP 1071038 300

Scale 1:30 432
 240 0 240 480 720
 Metres
 Printed By: Marian Smith
 Date Printed: 26/05/2010
 Land NSW Office: DUBBO
 Telephone: (02) 6863 3500

PARISH: ERLDURGERE
 COUNTY: WELLINGTON
 LGA: MID-WESTERN REGIONAL
 SUBURB: PAMBONG

Department of Lands

This Deed of Partition shows the boundaries of the parcels as shown on the map and map amendments that have been made since the last map. The boundaries of Crown land are shown in blue. The boundaries of private land are shown in black. This is a diagrammatic representation only.
 Crown Estate Copyright Crown Land 1980