



SHOP 1/25 Perry Street Mudgee NSW

CURRENTLY COMPRISES RECEPTION AREA AND 2 LARGE OFFICES, KITCHEN STOREROOM AND TOILET.

AIR CONDITIONED. APPROX 84sqm.

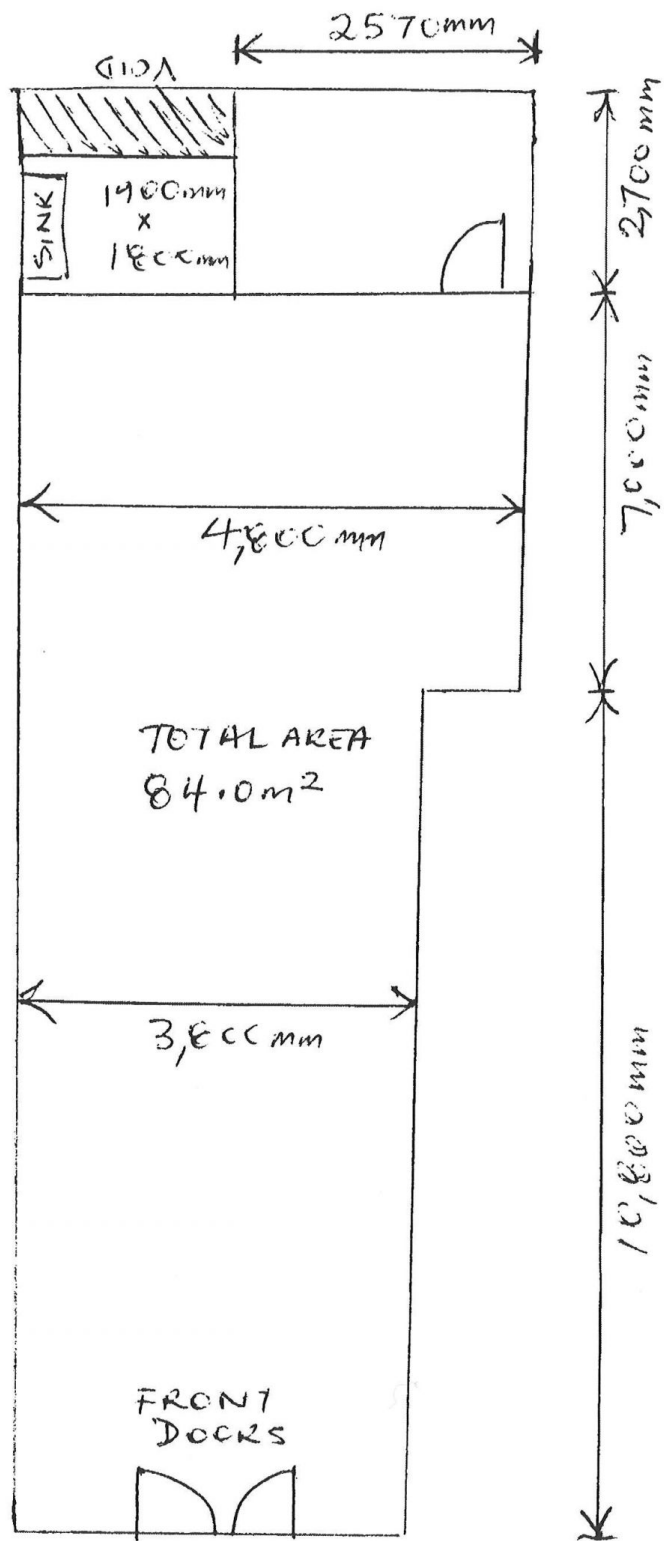
AVAILABLE NOW CONTACT JUNE LEWIS FOR INSPECTION

Building Size : 84 sqm

View : <https://www.thepropertyshop.com.au/lease/nsw/dubbo-orana/mudgee/commercial/offices/5658272>



June Lewis
02 6372 2222



STEP 2 / 25 PERRY ST.

NOT TO SCALE