

9 SWORDS Court MUDGEES NSW

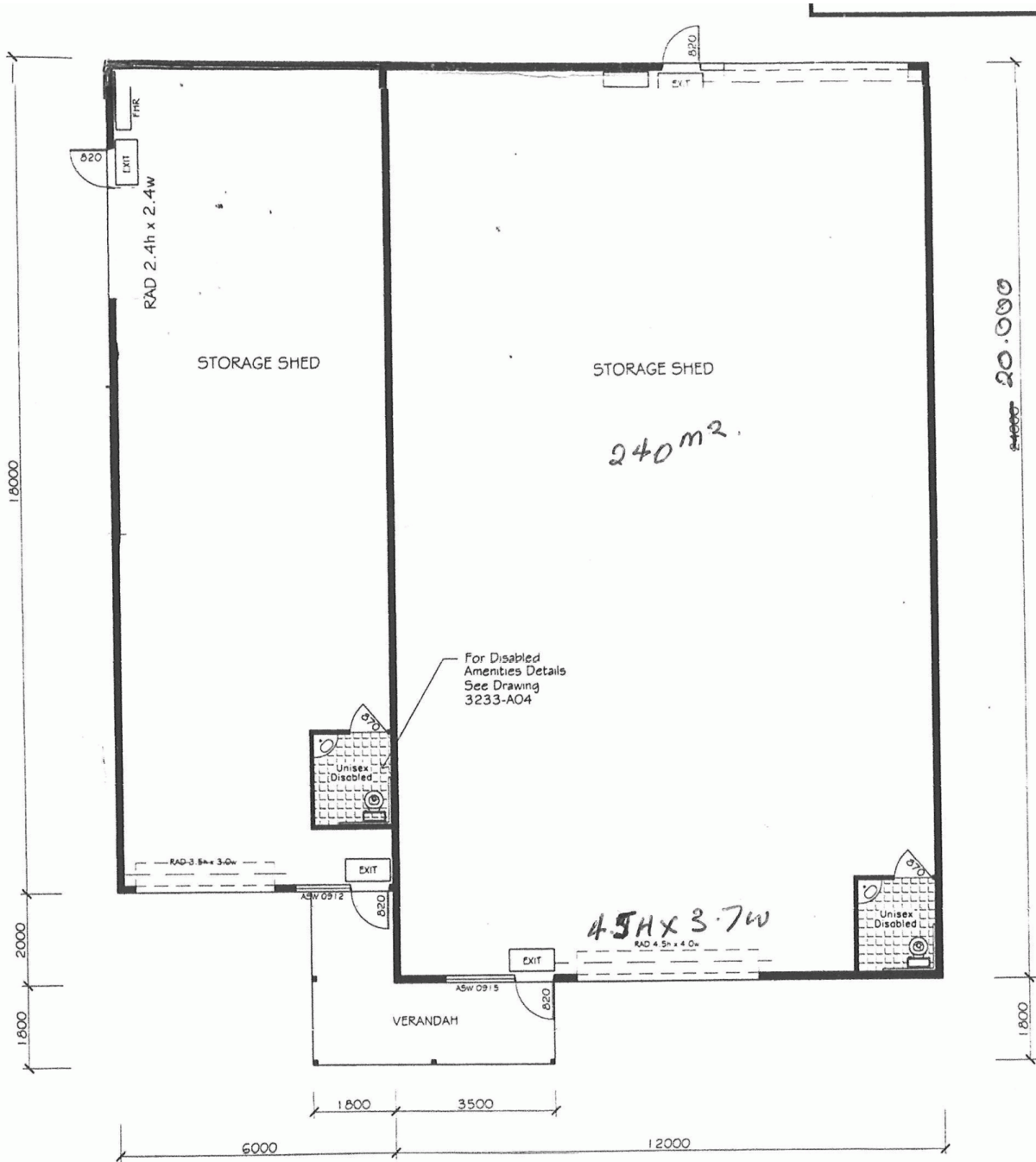
COMMERCIAL SHEDDING IN SWORDS COURT WITH WIDE HIGH OPENING ROLLER DOOR, CONCRETE DRIVEWAY AND TOILET FACILITIES. EXCELLENT FRONTAGE.

Building Size : 240 sqm

View : <https://www.thepropertyshop.com.au/lease/nsw/dubbo-orana/mudgee/commercial/industrial/5657206>

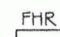

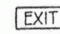


June Lewis
02 6372 2222



FLOOR PLAN
SCALE 1:100

LEGEND

-  36m Fire Hose Reel
-  Fire Extinguisher
-  Illuminated Exit Sign and Emergency Lighting