



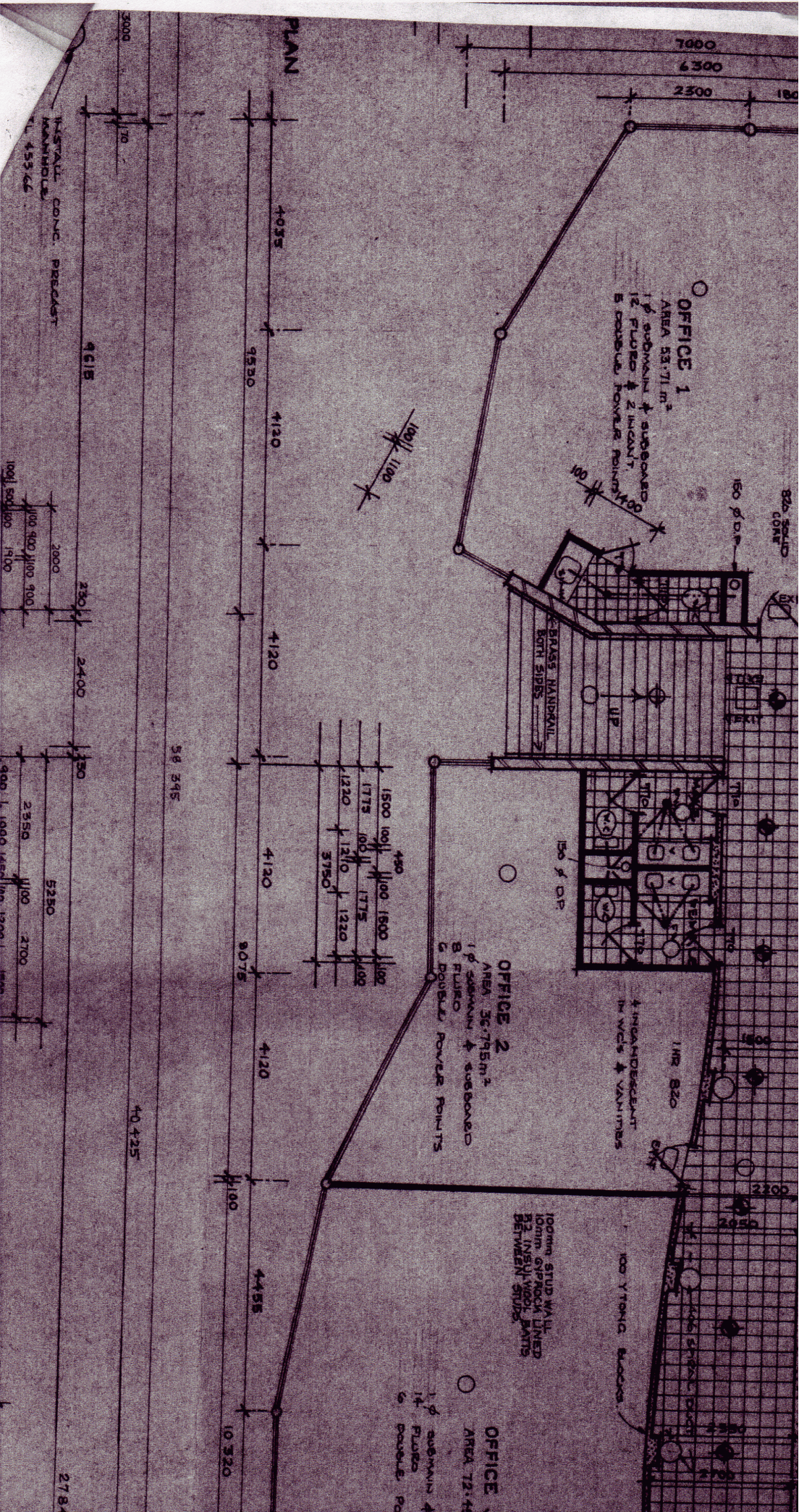
OFFICE 1,/62 CHURCH Street MUDGEE NSW

MODERN UPSTAIRS OFFICE SPACE IN THE NATIONAL CENTRE - HEART OF THE CBD
APPROXIMATELY 53 SQUARE METRES, AIR
CONDITIONED
THE NATIONAL CENTRE IS ACCESSIBLE FROM
BYRON PLACE AND BUSY CHURCH STREET.

Building Size : 53 sqm
View : <https://www.thepropertyshop.com.au/lease/nsw/dubbo-orana/mudgee/commercial/offices/5657156>



June Lewis
02 6372 2222



OFFICE 1
 AREA 53.71 m²

1st submain & subboard
 12 FURCO & 2 INCH
 2 DOUBLE POWER POINTS

OFFICE 2
 AREA 36.795 m²

1st submain & subboard
 8 FURCO
 2 DOUBLE POWER POINTS

OFFICE 3
 AREA 72.44

1st submain &
 14 FURCO
 6 DOUBLE POWER POINTS

INSTALL CONC. PRECAST
 RAILINGS
 TO 455166

100mm STUD WALL
 10mm GYPROCK LINED
 52 (NEW) WOOL Batts
 BETWEEN STUDS

BRASS HANDRAIL
 BOTH SIDES

4 INCH DECENT
 IN VCS & VANITIES

100 YONG BLOCKS

80% SOLID
 CONCRETE

PLAN

2784